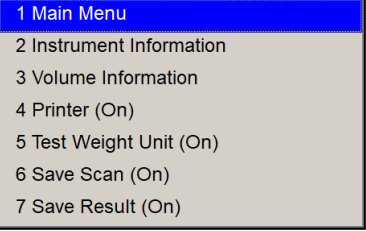
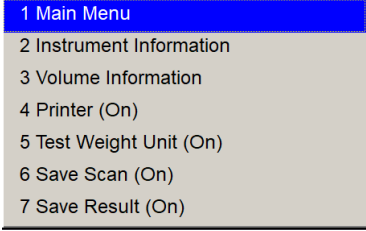
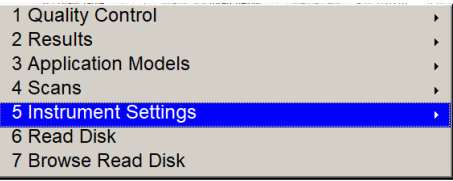
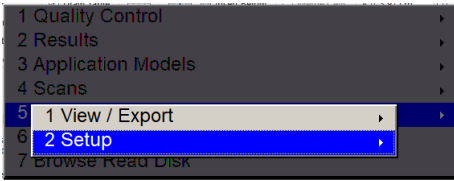
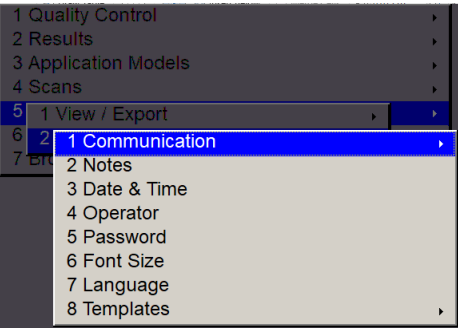
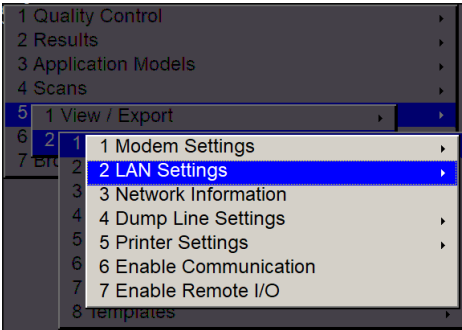
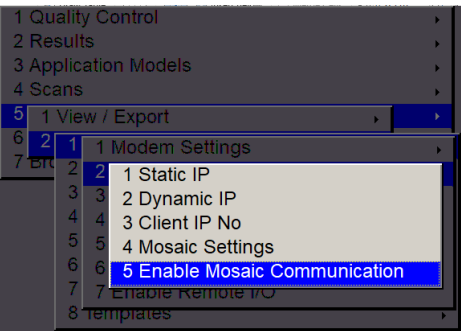
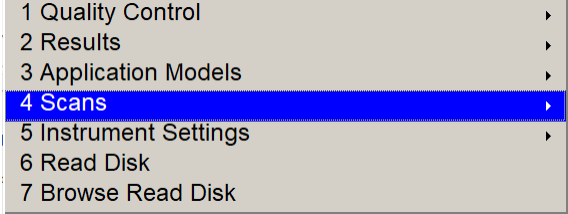
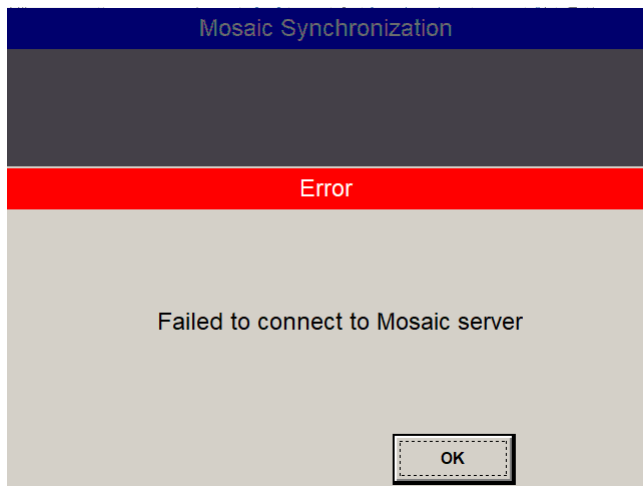


How to

Perform Manual Synchronization to Mosaic

<p>1. Press MENU to access Quick Menu.</p> 	<p>2. Select "1 Main Menu". Enter password 123456, then</p> 
<p>3. Select "5 Instrument Settings"</p> 	<p>4. Select "2 Setup"</p> 
<p>5. Select "1 Communication"</p> 	<p>6. Select "2 LAN Settings"</p> 
<p>7. Select "5 Enable Mosaic Communication". Press Enter.</p> 	<p>8. Press the left arrow to return to Main Menu or Press MENU button to return to operator screen.</p> 



Common issues

- The Ethernet cable has been unplugged from the wall or instrument
- The Ethernet cable has been plugged in to the wrong port
- Local IT issues with firewall
- Incorrect Mosaic address